



# Poly Suede



**W**hen your event calls for an elegant alternative to the everyday linens, Poly Suede delivers in style! This permanent press, soil-release fabric is easy care and will maintain its luxurious appearance and color fastness for several uses.

**Fabric Width - 60"**

*If your tablecloth is wider than 60", there will be seams.*

- ◀ Poly Suede box pleat skirting is a 100% Polyester fabric that is a great alternative to your everyday polyesters. Make a statement with this fabric! Shown in British Tan.

**Available Colors** *We want you to be thrilled with your purchase. Since printing has its limits, the only way to be sure of the color is to order a fabric sample before making your table linen purchase.*

Ivory



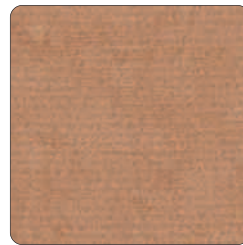
Camel



Gold



British Tan



Brown



Forest



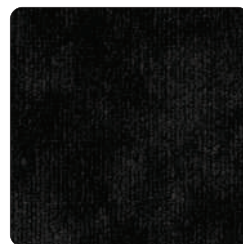
Navy



Burgundy



Black



### Care Instructions

Warm water wash (110 degrees).  
Rinse on cool/permanent press cycle.  
Use mild detergent only.  
Avoid high alkaline level.  
No bleach.  
Tumble dry, low heat with cool down cycle.  
Remove promptly from dryer.  
Do not over-dry.

Excessive heat in the drying process will "shock" the fabric leaving the cloth permanently wrinkled. Please be sure to follow care instructions.



The ultimate in plush is Poly Suede.

## Additional Information and Pricing

Sold individually, column pricing is for quantities in the same size and color.  
To see what size tablecloth you need and how linens are finished, refer to page 36.



### Round Item# 18G-RD

Size	Qty 1-5	Qty 6-12	Qty 13-24	Qty 25-36	Qty 37+
70"	\$ 43.58	\$ 29.05	\$ 28.11	\$ 27.23	\$ 26.41
90"	\$ 62.08	\$ 41.39	\$ 40.05	\$ 38.80	\$ 37.62
96"	\$ 70.88	\$ 47.25	\$ 45.73	\$ 44.30	\$ 42.95
108"	\$ 89.25	\$ 59.50	\$ 57.58	\$ 55.78	\$ 54.09
120"	\$ 111.05	\$ 74.03	\$ 71.64	\$ 69.40	\$ 67.30
132"	\$ 134.67	\$ 89.78	\$ 86.88	\$ 84.16	\$ 81.61



### Rectangular Item# 18G-R

Size	Qty 1-5	Qty 6-12	Qty 13-24	Qty 25-36	Qty 37+
54" x 96"	\$ 45.55	\$ 30.36	\$ 29.38	\$ 28.46	\$ 27.60
54" x 120"	\$ 56.70	\$ 37.80	\$ 36.58	\$ 35.44	\$ 34.36
60" x 120"	\$ 56.70	\$ 37.80	\$ 36.58	\$ 35.44	\$ 34.36
60" x 144"	\$ 68.00	\$ 45.33	\$ 43.86	\$ 42.49	\$ 41.20
70" x 120"	\$ 69.70	\$ 46.46	\$ 44.96	\$ 43.56	\$ 42.24
70" x 144"	\$ 82.70	\$ 55.13	\$ 53.35	\$ 51.68	\$ 50.11
* 90" x 132"	\$ 93.32	\$ 62.21	\$ 60.21	\$ 58.32	\$ 56.56
* 90" x 156"	\$ 110.25	\$ 73.50	\$ 71.13	\$ 68.91	\$ 66.82

\*Corners are rounded to keep your cloth from puddling as this size typically drapes to the floor.



### Square Item# 18G-S

Size	Qty 1-5	Qty 6-12	Qty 13-24	Qty 25-36	Qty 37+
45" x 45"	\$ 22.45	\$ 14.96	\$ 14.48	\$ 14.03	\$ 13.60
54" x 54"	\$ 26.65	\$ 17.76	\$ 17.19	\$ 16.65	\$ 16.15
60" x 60"	\$ 29.53	\$ 19.69	\$ 19.05	\$ 18.46	\$ 17.90
70" x 70"	\$ 43.70	\$ 29.14	\$ 28.20	\$ 27.32	\$ 26.49
90" x 90"	\$ 76.25	\$ 50.84	\$ 49.20	\$ 47.66	\$ 46.22



### Napkins Item# 18G-N

 Sold by the dozen.

Size	Qty 1-5	Qty 6-12	Qty 13-24	Qty 25-36	Qty 37+
17" x 17"	\$ 37.28	\$ 24.85	\$ 24.05	\$ 23.30	\$ 22.59
20" x 20"	\$ 42.53	\$ 28.35	\$ 27.44	\$ 26.58	\$ 25.77



### Skirting Item# 18G-SK

 Sold by the foot. Price includes clips.

Clips fit up to 1" Table top thickness. Skirting is 29" high.	Price/foot
Shirred Style	\$ 9.45
Box Pleat Style	\$ 13.83

Placemats, fabric samples, oval tablecloths, fitted tablecloths, chair covers,  
and fabric by the yard are also available at  
[www.BrightSettings.com](http://www.BrightSettings.com)

Poly Suede  
British Tan

